

# NATIONAL GREEN POWER ACCREDITATION PROGRAM

## Quarterly Status Report, 1 October– 31 December, 2005

This report forms part of an ongoing commitment to provide stakeholders with information on Green Power Products. The first section of this report provides general information on the National Green Power Accreditation Program. This is followed by an overview of each Green Power Product with information on sales, purchases and customer numbers.

The current Settlement Period is from 1 January 2005 to 31 December 2005. The dates of the Quarters are as follows:

- *Quarter 1:* 1 January to 31 March, 2005
- *Quarter 2:* 1 April to 30 June, 2005
- *Quarter 3:* 1 July to 30 September, 2005
- ***Quarter 4: 1 October to 31 December, 2005***

This report, as well as additional information about Green Power, is available on the Green Power website:

[www.greenpower.gov.au](http://www.greenpower.gov.au)

## Executive Summary

### QUARTER IN REVIEW: 1 OCTOBER – 31 DECEMBER 2005

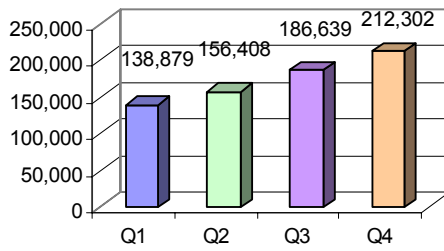
Green Power Products totalled 19 for the Quarter, offered by 12 retailers. Availability and characteristics of the products, sales and total customers are described in this report. A summary of key data, collated across the Green Power market is provided below.

### Quarterly Status of National Green Power Accreditation Program

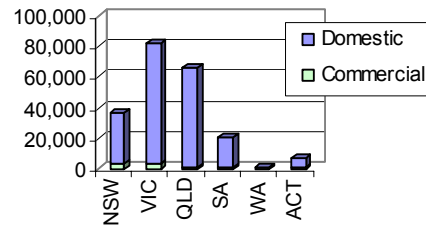
	NSW	VIC	QLD	SA	WA	ACT	Total
Residential Customers	33,579	78,734	64,639	20,217	1,127	6,363	204,659
Commercial Customers	3,379	3,108	909	64	105	78	7,643
<b>Total Green Power Customers (net change this quarter)</b>	<b>36,958 (5,647)</b>	<b>81,842 (13,756)</b>	<b>65,548 (2,556)</b>	<b>20,281 (3,673)</b>	<b>1,232 (44)</b>	<b>6,441 (-13)</b>	<b>212,302 (25,663)</b>
Green Power Sales to Residential Customers (MWh)	21,913	21,060	17,402	4,673	1,021	4,298	70,367
Green Power Sales to Commercial Customers (MWh)	46,574	20,905	11,743	666	2,395	6,795	89,079
<b>Total Green Power Sales (MWh)</b>	<b>68,488</b>	<b>41,965</b>	<b>29,146</b>	<b>5,339</b>	<b>3,416</b>	<b>11,093</b>	<b>159,446</b>

## GREEN POWER CUSTOMERS

### Total Green Power Customers Per Quarter

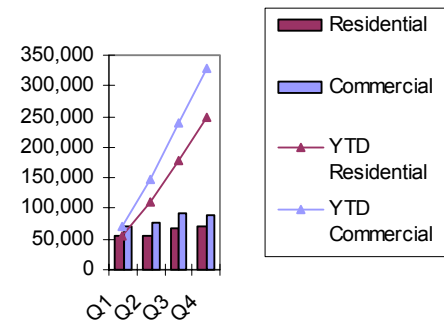


### Total Commercial and Residential Customers Per State this Quarter

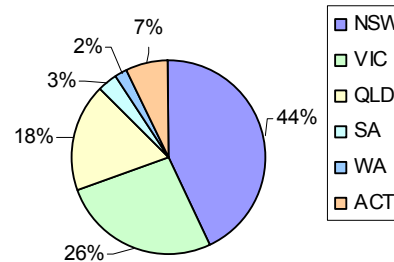


## GREEN POWER SALES

### Quarterly and Year to Date (YTD) Commercial and Residential Green Power Sales (MWh)

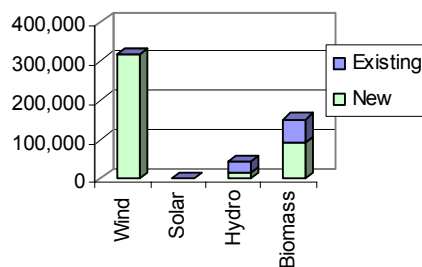


### Green Power Sales (MWh) this Quarter by State



## GREEN POWER PURCHASES

### New and Existing Green Power Purchased this Quarter by Generation Type (MWh)



### Year to Date Green Power Purchased by Generation Type (MWh)

Generation Type	Existing (MWh)	New (MWh)	Total (MWh)
Wind	0.0	860,737.8	860,737.8
Solar	42.4	1,640.5	1,682.9
Hydro	119,286.4	49,341.2	168,627.6
Biomass	201,204.5	303,112.4	504,316.9
<b>Total</b>	<b>320,533.3</b>	<b>1,214,832</b>	<b>1,535,365</b>

'New' Green Power purchased this Quarter: 423,141 MWh  
 'Existing' Green Power purchased this Quarter: 90,272 MWh  
 Total Green Power purchased this Quarter: 513,414 MWh

## About the National Green Power Accreditation Program

To facilitate the growth of 'green' electricity generated by renewable resources, the NSW Government developed the *Green Power Accreditation Program* in April 1997. The purpose of the program is to promote the installation of new Green Power electricity generators by increasing consumer demand and confidence in accredited Green Power products.

Due to its success, the program was expanded nationally through joint collaboration by participating state government agencies in NSW, Victoria, Queensland, South Australia, ACT and Western Australia and renamed the '*National Green Power Accreditation Program*'. In May 2000, the National Green Power Accreditation Steering Group was officially established and the NSW Sustainable Energy Development Authority (SEDA) appointed as the Project Manager. SEDA's functions were incorporated into the NSW Department of Energy, Utilities & Sustainability (DEUS) on 1 July 2004.

Most energy retailers throughout Australia offer at least one accredited Green Power Product. In the contestable (deregulated) markets of NSW, VIC, SA and the ACT, all residential and commercial customers can choose to buy a Green Power Product offered by any retailer licensed in that State. Larger customers in WA and Queensland can also choose Green Power from licensed retailers outside their franchise area.

The two main types of Green Power products offered are:

1. Consumption based products whereby customers nominate the level of Green Power purchased according to a nominated percentage of their total electricity consumption; and
2. Contribution of 'block' products whereby customers nominate a set dollar contribution or purchase a kWh 'block' of Green Power that is based on the average household electricity consumption and is not directly linked to an individual customer's consumption.

Blended Green Power products apply when a customer purchases a level of Green Power equivalent to less than 100% of their electricity consumption. The 'backfill' or *non-accredited portion* of blended products is not reported on and can therefore be sourced from any type of electricity generation.

### RULES OF THE PROGRAM

The National Green Power Accreditation Program sets stringent rules for all Retailers offering an accredited Green Power Product. Two key requirements are for Retailers to: source all generation included in a Green Power product from Green Power approved sources; and purchase at least eighty per cent of Green Power sales from 'new' renewable energy generation. 'New' is defined as any generator built or commissioned after 1 January 1997 that is Green Power approved. Further information on the rules of the program is available in the *National Green Power Accreditation Document*, available on the website at [www.greenpower.gov.au](http://www.greenpower.gov.au)

To ensure that Green Power sales are additional to legislated renewable energy purchases through the Mandatory Renewable Energy Target (MRET), retailers are required to transfer eligible RECs for each MWh of generation classified as 'new' Green Power generation sold as part of a Green Power Product within a settlement period.

Note: A number of rule changes have been announced following the recent Green Power Review. The majority of the rule amendments will be implemented by 1 January 2006. Visit [www.greenpower.gov.au](http://www.greenpower.gov.au) for further details on the Green Power Review and outcomes.

### GREEN POWER GENERATORS

Under the National Green Power Accreditation Program, a 'green' electricity generator is defined as an electricity generator that results in a greenhouse gas emission reduction and net environmental benefits; is based primarily on a renewable energy resource; and complies with the guidelines in the National Green Power Program Accreditation Document. A description of the major generator types is provided in Appendix A.

There are currently about 258 Green Power approved generators in Australia, including over 168 'new' generators, which have been commissioned or first sold energy since January 1 1997. For a comprehensive list of Green Power approved generators, please visit the Download section of the Green Power website at [www.greenpower.gov.au](http://www.greenpower.gov.au) or e-mail [greenpower@deus.nsw.gov.au](mailto:greenpower@deus.nsw.gov.au).



## 'NEW' GREEN POWER GENERATORS THIS QUARTER

The table below details the 'new' Green Power generators approved in the quarter ending 31 December 2005.

Generator	Generation Type	Commissioning Date	Location
Mt Millar Wind Farm	Wind	1 December 2005	Eyre Peninsula
Banimboola Power Station (BAPS)	Hydro - Storage	1 November 2005	Dartmouth Dam, Mitta Mitta River
Darwin Renewable Energy Facility	Bioenergy - Landfill	1 September 2005	Shoal Bay, Darwin

## GREEN POWER PRODUCTS

Green Power Products are available to electricity consumers in the commercial and residential markets. In some cases, different products are available to each market sector. The table below details the States in which Green Power Products were offered during the Quarter.

### Green Power Products Offered this Quarter

Retailer	Product	States Offered					
		NSW	VIC	QLD	SA	WA	ACT
ActewAGL	GreenChoice	☀	☀	☀	☀	☀	☀
AGL	Green Living	*	*	*	*		*
	Green Energy	☀	☀	✓	☀	✓	✓
Country Energy	Countrygreen	☀	☀	✓	✓		✓
	Countrygreen energy	☀	☀	☀			☀
Energex	Earth'schoice	☀	☀	☀	✓	✓	☀
EnergyAustralia	PureEnergy	☀	✓	✓			
EA-IPR Retail Partnership	GreenSaver		*		*		
Ergon Energy	Clean Energy from Ergon Energy			☀			
	Clean Energy Plus Option	✓	✓	✓			✓
Integral Energy	Hampton Park Wind	☀					
	Wyuna Water	☀					
	Business Green	✓					
Origin Energy	GreenEarth	☀	☀		☀		
	GreenEarth Extra	*	*		*		
	GreenEarth Wind	*	*		*		
	GreenEarth Solar	*	*		*		
	EcoSaver – Residential Option (not currently offered to new customers)		*				
	EcoPower – Business Option (not currently offered to new customers)		✓				
	EcoPower – Residential Option (not currently offered to new customers)		*				
TRUenergy	TRUenergy green	☀	☀		☀		
Western Power	NaturalPower					☀	

☀ Available to residential/commercial customers

\* Available to residential customers only

✓ Available to commercial customers only

# ActewAGL GreenChoice

**Availability:** All residential and business customers Australia-wide.

**Residential Customer Options:** Choose GreenChoice5, GreenChoice10 or GreenChoice15. ActewAGL will then purchase 5, 10 or 15 kWh of energy per day from Green Power approved renewable sources for each GreenChoice residential customer.

**Business Customer Options:** Choose Business GreenChoice10. Business customers may elect to purchase multiples of 10 kWh per day. ActewAGL will then purchase the number of standard units nominated per day from Green Power approved renewable sources.

**Quarter in Review:** At the end of December 2005 there were 6,463 residential and 42 commercial GreenChoice customers. During the Quarter ending 31 December 2005 GreenChoice residential sales amounted to 4,322 MWh, commercial sales amounted to 39 MWh with total sales for the quarter 4,361 MWh.

**'New' Green Power purchases this Quarter:** Starfish Hill and Canunda Wind Farms and Rockingham and West Nowra LFG Power Generation Facilities.

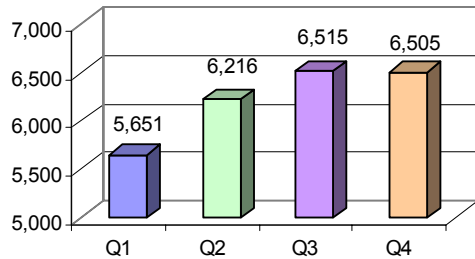
**Contact ActewAGL:** On 13 14 93 or visit [www.actewagl.com.au/greenchoice](http://www.actewagl.com.au/greenchoice).



## Quarter in Review

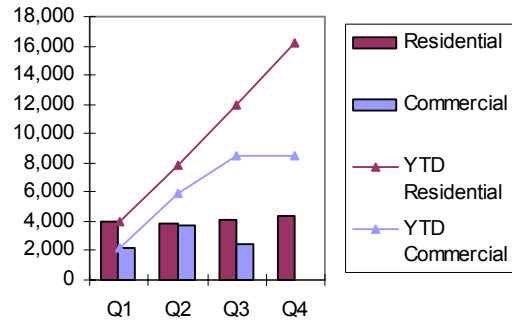
### GREEN POWER CUSTOMERS

#### Total Green Power Customers Per Quarter



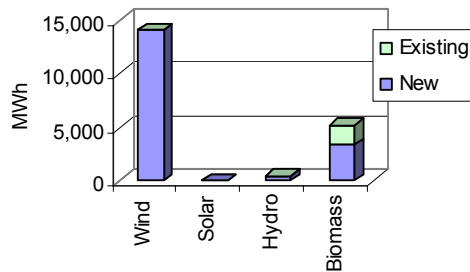
### GREEN POWER SALES

#### Quarterly and Year to Date (YTD) Green Power Sales (MWh)



### Green Power Purchases

#### New and Existing<sup>1</sup> Green Power Purchased this Quarter by Generation Type (MWh)



New Purchased: 17,870 MWh  
Existing Purchased: 1,888 MWh

#### Year to Date Green Power Purchased by Generation Type (MWh)

Generation Type	Existing (MWh)	New (MWh)	Total (MWh)
Wind		18,105.0	<b>18,105.0</b>
Solar		0.0	<b>0.0</b>
Hydro		440.0	<b>440.0</b>
Biomass	3,388.0	4,825.0	<b>8,213.0</b>
<b>Total</b>	<b>3,388.0</b>	<b>23,370.0</b>	<b>26,758.0</b>



# AGL Green Energy



**Availability:** Residential customers in Victoria, NSW and South Australia and commercial customers in all states.

**Residential customer Options:** Choose to purchase the equivalent of 10%, 25%, 50% or 100% of electricity from Green Power approved renewable energy sources.

**Commercial customer Options:** Select the preferred level of green tariff anywhere from 1% to 100%.

**Quarter in Review:** At the end of December 2005 there were 2,232 residential and 1,404 commercial Green Energy customers. During the Quarter ending 31 December 2005 Green Energy residential sales amounted to 917 MWh, commercial sales amounted to 8,256 MWh with total sales for the quarter 9,173 MWh.

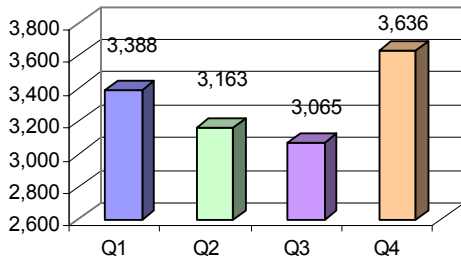
**'New' Green Power purchases this Quarter:** Starfish Hill and Canunda Wind Farms and West Nowra, Gosnells and Rockingham biomass facilities.

**Contact AGL:** On 1300 556 245 or visit: [www.agl.com.au](http://www.agl.com.au).

## Quarter in Review

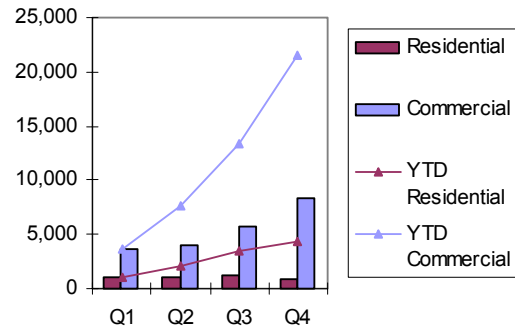
### GREEN POWER CUSTOMERS

#### Total Green Power Customers Per Quarter



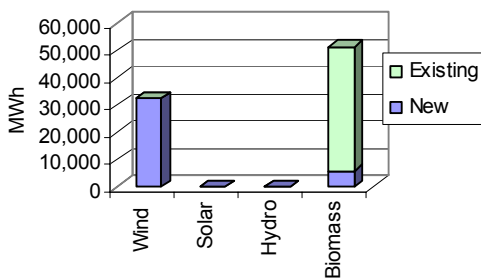
### GREEN POWER SALES

#### Quarterly and Year to Date (YTD) Green Power Sales (MWh)



### Green Power Purchases

#### New and Existing<sup>1</sup> Green Power Purchased this Quarter by Generation Type (MWh)



#### Year to Date Green Power Purchased by Generation Type (MWh)

Generation Type	Existing (MWh)	New (MWh)	Total (MWh)
Wind	0.0	126,805.6	126,805.6
Solar	0.0	0.0	0.0
Hydro	0.0	0.0	0.0
Biomass	142,284.9	20,602.2	162,887.2
<b>Total</b>	<b>142,284.9</b>	<b>147,407.8</b>	<b>289,692.8</b>

New Purchased: 38,139 MWh  
Existing Purchased: 45,349 MWh



## AGL Green Living

AGL Green Living was launched during the quarter ending June 2005. Green Living is 5% Green Power accredited.

**Availability:** Residential customers in Victoria, NSW and South Australia.

**Quarter in Review:** At the end of December 2005 there were 17,540 residential Green Living customers. During the Quarter ending 31 December 2005, the Green Power accredited proportion of Green Living sales amounted to 655 MWh.

**'New' Green Power purchases this Quarter:** Starfish Hill and Canunda wind farms.

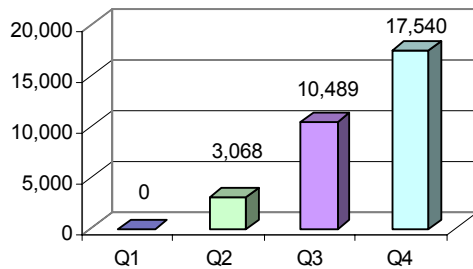
**Contact AGL:** On 1300 556 245 or visit: [www.agl.com.au](http://www.agl.com.au).



## Quarter in Review

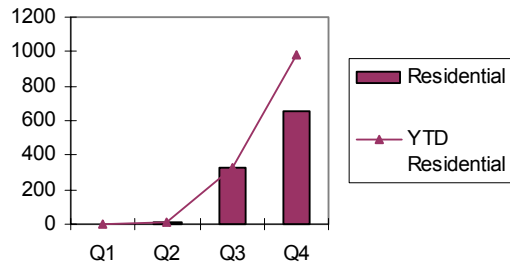
### GREEN POWER CUSTOMERS

Total Green Power Customers Per Quarter



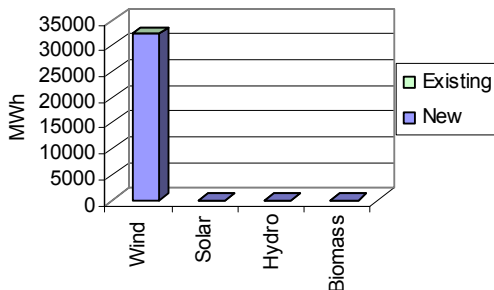
### GREEN POWER SALES

Quarterly and Year to Date (YTD) Green Power Sales (MWh)



### Green Power Purchases

New and Existing<sup>1</sup> Green Power Purchased this Quarter by Generation Type (MWh)



Year to Date Green Power Purchased by Generation Type (MWh)

Generation Type	Existing (MWh)	New (MWh)	Total (MWh)
Wind	0.0	32,688.2	32,688.2
Solar	0.0	0.0	0.0
Hydro	0.0	0.0	0.0
Biomass	?? 0.0	?? 0.0	0.0
<b>Total</b>	<b>0.0</b>	<b>32,688.2</b>	<b>32,688.2</b>

New Purchased: 32,312 MWh  
Existing Purchased: 0 MWh

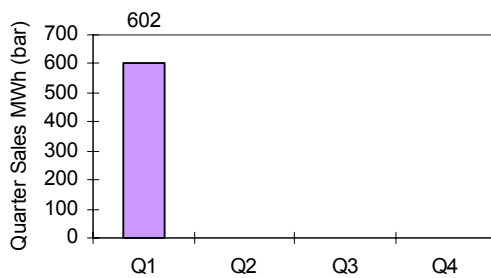
## AusPower Verdant



Due to various industry movements the AusPower Verdant Green Power product was discontinued in the second quarter of the settlement period. AusPower Verdant remains in each Green Power quarterly report but shows no activity for the remaining quarters of the current settlement period.

### GREEN POWER SALES

#### Quarterly Green Power Sales (MWh)



### GREEN POWER PURCHASES

#### Year to Date Green Power Purchased by Generation Type (MWh)

Generation Type	Existing (MWh)	New (MWh)	Total (MWh)
Wind	0.0	0.0	<b>0.0</b>
Solar	0.0	0.0	<b>0.0</b>
Hydro	0.0	0.0	<b>0.0</b>
Biomass	0.0	30,689	<b>30,689</b>
<b>Total</b>	<b>0.0</b>	<b>30,689</b>	<b>30,689</b>

## AiR Energy

Following the merger of Australian Inland Energy and Country Energy on 1 October 2005, Country Energy's product AiR Energy was discontinued. Customers are now offered Country Energy's existing Green Power product options.

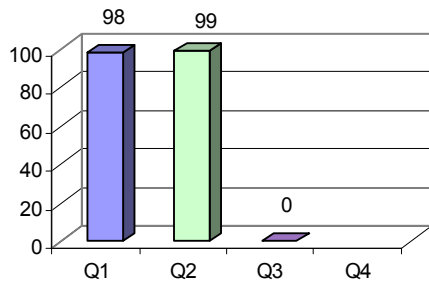


**Quarter in Review:** At the end of December 2005 there were no AiR Energy customers as customers choosing to remain with the Green Power program were transferred to Country Energy's Green Power products. During the Quarter ending 31 December 2005 there were no AiR Energy sales or purchases. It is noted that sales for the year exceed purchases. Country Energy has reported that it will address this issue. This issue will also be examined as part of the annual Green Power audit.

## Quarter in Review

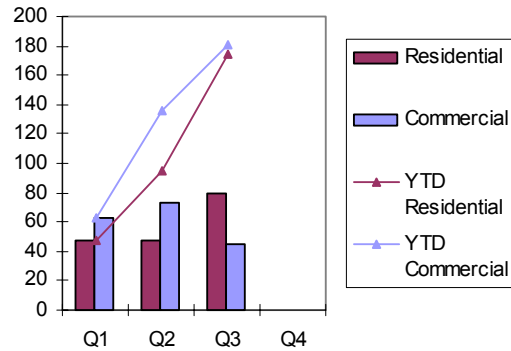
### GREEN POWER CUSTOMERS

Total Green Power Customers Per Quarter



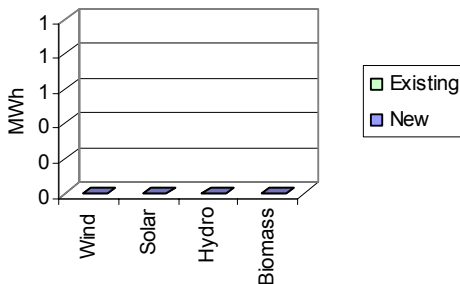
### GREEN POWER SALES

Quarterly and Year to Date (YTD) Green Power Sales (MWh)



### Green Power Purchases

New and Existing<sup>1</sup> Green Power Purchased this Quarter by Generation Type (MWh)



Year to Date Green Power Purchased by Generation Type (MWh)

Generation Type	Existing (MWh)	New (MWh)	Total (MWh)
Wind	0.0	0.0	0.0
Solar	0.0	0.0	0.0
Hydro	0.0	0.0	0.0
Biomass	0.0	0.0	0.0
<b>Total</b>	<b>0.0</b>	<b>0.0</b>	<b>0.0</b>

Existing Purchased: 0 MWh

New Purchased: 0 MWh



# Climate Friendly – Climate Neutral™

Climate Friendly is a new wave company which makes Green Power available nationally using a web interface and also directly to the corporate sector. While Climate Neutral customers continue to purchase electricity from their standard electricity supplier, Climate Friendly will purchase and surrender the equivalent number of Green Power Rights and Renewable Energy Certificates (RECs) from eligible generation sources to meet the customer's electricity consumption.

**Availability:** Residential and business customers throughout Australia.

**Residential and Commercial Customer Options:** Select one of three options: Emerald - 100% accredited Green Power, Green - 25% accredited Green Power, Economy - 10% accredited Green Power. All Green Power rights are sourced from 'new' wind generators.

**Quarter in Review:** At the end of December 2005 there were 6 residential and 4 commercial Climate Neutral customers. During the Quarter ending 31 December 2005 Climate Neutral residential sales amounted to 4 MWh, commercial sales amounted to 115 MWh with total sales for the quarter 119 MWh.

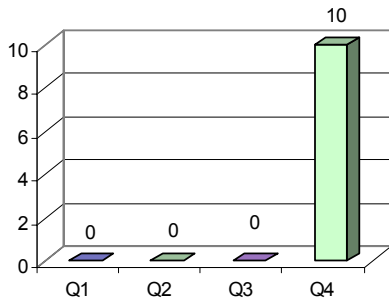
**'New' Green Power purchases this Quarter:** Canunda Wind Farm.

**Contact Climate Friendly:** On (02) 9281 0358, [sales@climatefriendly.com](mailto:sales@climatefriendly.com) or visit [www.climatefriendly.com](http://www.climatefriendly.com)

## Quarter in Review

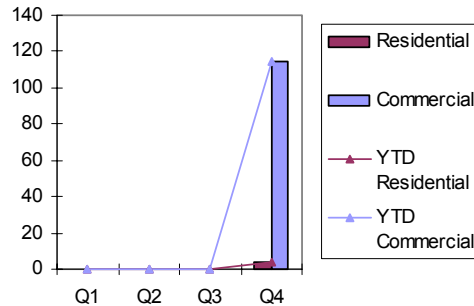
### GREEN POWER CUSTOMERS

Total Green Power Customers Per Quarter



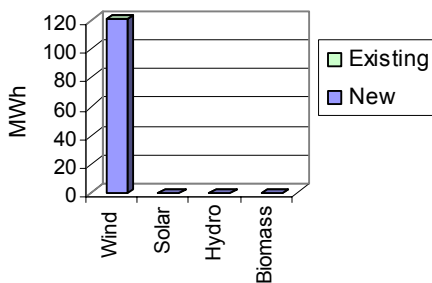
### GREEN POWER SALES

Quarterly and Year to Date (YTD) Green Power Sales (MWh)



### Green Power Purchases

New and Existing<sup>1</sup> Green Power Purchased this Quarter by Generation Type (MWh)



Year to Date Green Power Purchased by Generation Type (MWh)

Generation Type	Existing (MWh)	New (MWh)	Total (MWh)
Wind	0.0	120.0	120.0
Solar	0.0	0.0	0.0
Hydro	0.0	0.0	0.0
Biomass	0.0	0.0	0.0
<b>Total</b>	<b>0.0</b>	<b>120.0</b>	<b>120.0</b>

Existing Purchased: 0 MWh

New Purchased: 120 MWh



# Country Energy countrygreen



**Availability:** Residential and business customers in NSW and Victoria and contestable business customers in Queensland, ACT and South Australia.

**Residential customer Options:** Select one of three options: *liteGREEN*, *livingGREEN* or *pureGREEN* - an amount approximately equal to 20, 50 or 100 per cent of energy usage will be sourced from Green Power approved sources.

**Commercial customer Options:** Choose to purchase anywhere between 2.5% and 100% energy from Green Power approved renewable sources.

**Quarter in Review:** At the end of December 2005 there were 2,117 residential and 1,051 commercial countrygreen customers. During the Quarter ending 31 December 2005 countrygreen residential sales amounted to 934 MWh, commercial sales amounted to 11,408 MWh with total sales for the quarter 12,342 MWh.

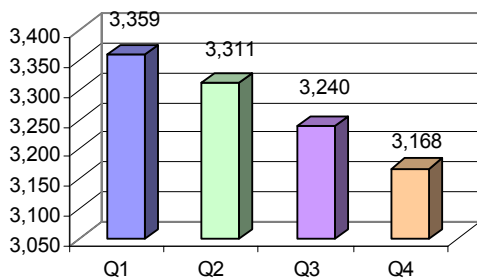
**'New' Green Power purchases this Quarter:** Broadwater and Condong Sugar Mills, Camellia Biogas Power Station, Rochedale and Whitwood Road Renewable Energy Facilities, Dungog Hydro and Chichester Dam.

**Contact Country Energy:** On 13 23 56, or visit [www.countryenergy.com.au](http://www.countryenergy.com.au).

## Quarter in Review

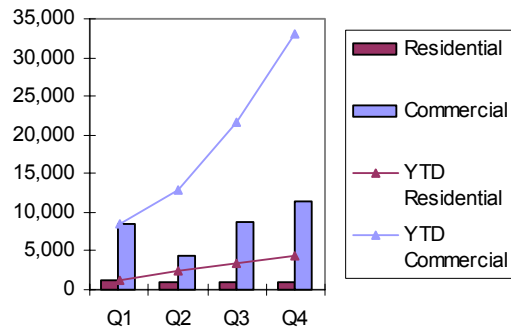
### GREEN POWER CUSTOMERS

Total Green Power Customers Per Quarter



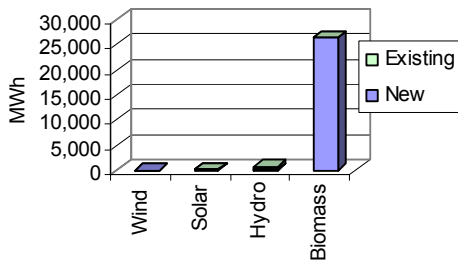
### GREEN POWER SALES

Quarterly and Year to Date (YTD) Green Power Sales (MWh)



### Green Power Purchases

New and Existing<sup>1</sup> Green Power Purchased this Quarter by Generation Type (MWh)



New Purchased: 26,520 MWh  
Existing Purchased: 652 MWh

Year to Date Green Power Purchased by Generation Type (MWh)

Generation Type	Existing (MWh)	New (MWh)	Total (MWh)
Wind	0.0	31,127.0	<b>31,127.0</b>
Solar	0.0	120.0	<b>120.0</b>
Hydro	15,773.0	336.1	<b>16,129.1</b>
Biomass	2,476.0	73,485.0	<b>75,961.0</b>
<b>Total</b>	<b>18,249.0</b>	<b>105,088.1</b>	<b>123,337.1</b>



# Country Energy countrygreen energy



**Availability:** Residential and commercial customers in NSW, ACT, Victoria, Queensland and South Australia.

**Residential Customer Options:** 12.5% Green Power accredited product offered at \$1.50 extra per week, based on an average annual household electricity consumption of 6,950kWh.

**Commercial Customer Options:** Tailored green energy solution, including the amount and type of renewable energy required to meet environmental targets.

**Quarter in Review:** At the end of December 2005 there were 6,803 residential and 210 commercial countrygreen energy customers. During the Quarter ending 31 December 2005 countrygreen energy residential sales amounted to 12,323 MWh, commercial sales amounted to 413 MWh with total sales for the quarter 12,736 MWh.

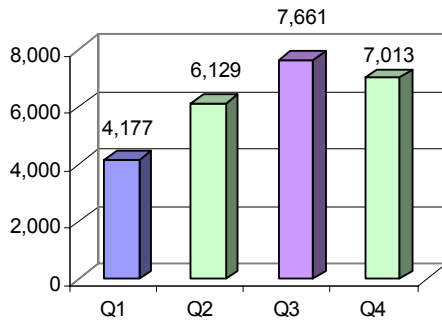
**'New' Green Power purchases this Quarter:** Blayney, Crookwell and Lake Bonney Wind Farms.

**Contact Country Energy:** On 13 23 56, or visit [www.countryenergy.com.au](http://www.countryenergy.com.au).

## Quarter in Review

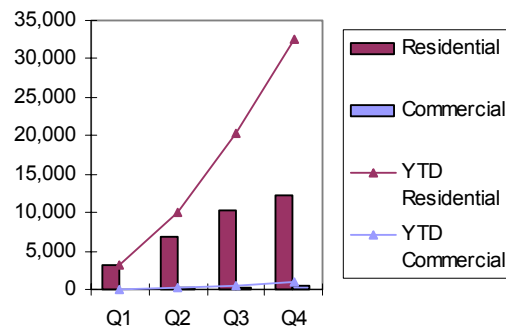
### GREEN POWER CUSTOMERS

Total Green Power Customers Per Quarter



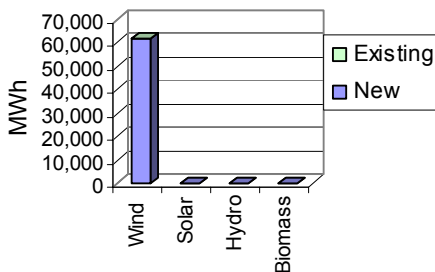
### GREEN POWER SALES

Quarterly and Year to Date (YTD) Green Power Sales (MWh)



### Green Power Purchases

New and Existing<sup>1</sup> Green Power Purchased this Quarter by Generation Type (MWh)



Year to Date Green Power Purchased by Generation Type (MWh)

Generation Type	Existing (MWh)	New (MWh)	Total (MWh)
Wind	0.0	186,357.0	186,357.0
Solar	0.0	0.0	0.0
Hydro	0.0	0.0	0.0
Biomass	0.0	0.0	0.0
<b>Total</b>	<b>0.0</b>	<b>186,357.0</b>	<b>186,357.0</b>

New Purchased: 61,703 MWh  
Existing Purchased: 0 MWh



# Energex earth'schoice



**Availability:** Energex's residential and business customers, as well as contestable business customers Australia wide.

**Residential Customer Options:** Choose a minimum kWh amount, ranging from 330 kWh to 1990 kWh per bill. For each contribution level, Energex will purchase a minimum amount of Green Power on behalf of the customer.

**Business Customer Options:** Choose a percentage of electricity consumption or a fixed volume of green energy (minimum level of 2.5% of electricity usage).

**Quarter in Review:** At the end of December 2005 there were 36,368 residential and 430 commercial earth'schoice customers. During the Quarter ending 31 December 2005 earth'schoice residential sales amounted to 14,440 MWh, commercial sales amounted to 15,179 MWh with total sales for the quarter 29,619 MWh.

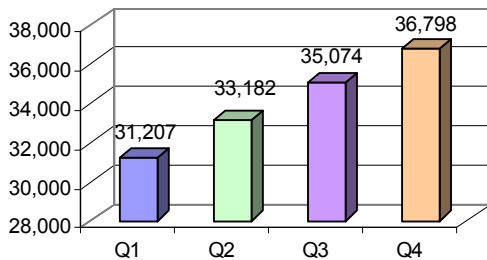
**'New' Green Power purchases this Quarter:** Landers Shute Pipeline, Pindari HEPS, Browns Plains Landfill, Rocky Point Sugar Mill Upgrade and various Solar PV Systems throughout Queensland.

**Contact ENERGEX:** On 13 12 53 or visit [www.energex.com.au](http://www.energex.com.au).

## Quarter in Review

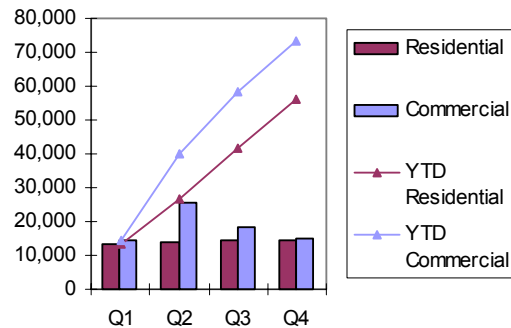
### GREEN POWER CUSTOMERS

Total Green Power Customers Per Quarter



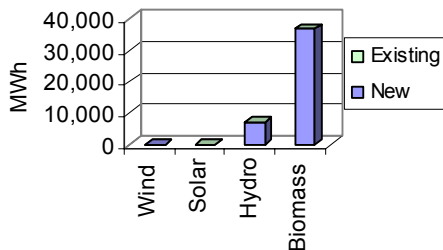
### GREEN POWER SALES

Quarterly and Year to Date (YTD) Green Power Sales (MWh)



### Green Power Purchases

New and Existing<sup>1</sup> Green Power Purchased this Quarter by Generation Type (MWh)



New Purchased: 43,934 MWh  
Existing Purchased: 0 MWh

Year to Date Green Power Purchased by Generation Type (MWh)

Generation Type	Existing (MWh)	New (MWh)	Total (MWh)
Wind	0.0	6,819.3	<b>6,819.3</b>
Solar	0.0	396.0	<b>396.0</b>
Hydro	0.0	10,295.8	<b>10,295.8</b>
Biomass	0.0	105,529.3	<b>105,529.3</b>
<b>Total</b>	<b>0.0</b>	<b>123,040.4</b>	<b>123,040.4</b>



# EnergyAustralia PureEnergy



**Availability:** Energy Australia’s residential and small business customers in NSW and contestable commercial and industrial customers in NSW, VIC and SA.

**Residential Customer Options:** Choose a percentage of total energy consumption purchased from Green Power approved renewable energy sources. Residential and small business customers may purchase 50% or 100% of electricity from approved renewable sources.

**Commercial Customer Options:** Contestable commercial and industrial customers may select any percentage of energy consumption from Green Power approved renewable energy sources.

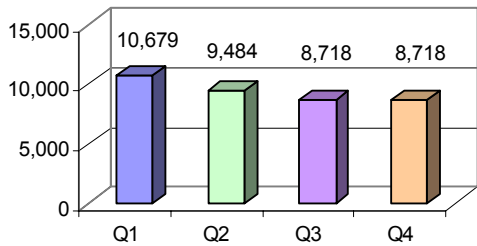
**Quarter in Review:** Energy Australia failed to provide information relating to PureEnergy for the quarter ending 31 December 2005. In the absence of this information the same level and type of activity from the previous quarter has been assumed. Information relating to the quarter ending 31 December 2005 will be examined as part of the annual audit.

**Contact EnergyAustralia:** On 13 15 35, or visit [www.energy.com.au](http://www.energy.com.au).

## Quarter in Review

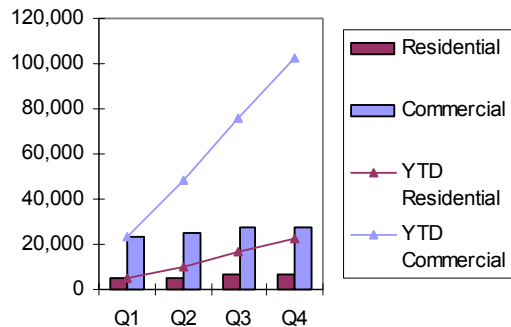
### GREEN POWER CUSTOMERS

Total Green Power Customers Per Quarter



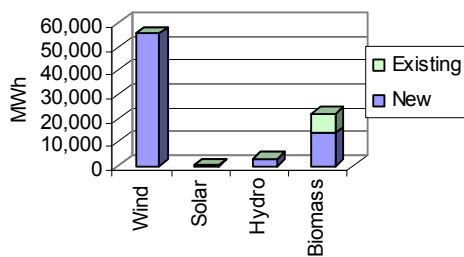
### GREEN POWER SALES

Quarterly and Year to Date (YTD) Green Power Sales (MWh)



### Green Power Purchases

New and Existing<sup>1</sup> Green Power Purchased this Quarter by Generation Type (MWh)



Year to Date Green Power Purchased by Generation Type (MWh)

Generation Type	Existing (MWh)	New (MWh)	Total (MWh)
Wind	0.0	111,108.9	<b>111,108.9</b>
Solar	9.0	656.2	<b>665.2</b>
Hydro	0.0	14,821.7	<b>14,821.7</b>
Biomass	30,778.6	78,223.7	<b>109,002.3</b>
<b>Total</b>	<b>30,787.6</b>	<b>204,810.5</b>	<b>235,598.2</b>

New Purchased: 72,498 MWh  
Existing Purchased: 8,366 MWh



## EA – IPR Retail Partnership GreenSaver

The EA-IPR Retail Partnership, trading as EnergyAustralia, is a 50:50 joint venture between EnergyAustralia and International Power. EA-IPR Retail Partnership launched GreenSaver on 5 September 2005. GreenSaver is a 12.5% Green Power accredited product.



**Availability:** Residential customers in Victoria and South Australia.

**Quarter in Review:** At the end of December 2005 there were 9,634 residential GreenSaver customers. During the Quarter ending 31 December 2005 GreenSaver sales amounted to 758 MWh.

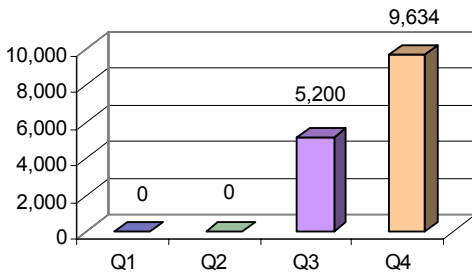
**'New' Green Power purchases this Quarter:** Invicta Sugar Mill Upgrade.

**Contact EnergyAustralia:** On 13 15 35, or visit [www.energy.com.au](http://www.energy.com.au).

## Quarter in Review

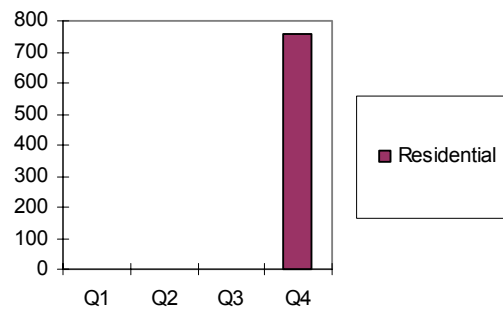
### GREEN POWER CUSTOMERS

Total Green Power Customers Per Quarter



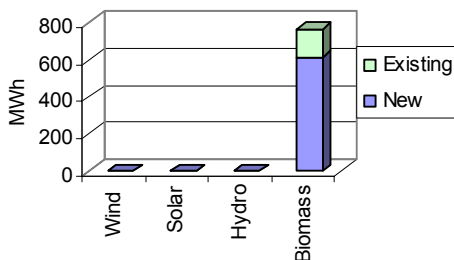
### GREEN POWER SALES

Quarterly and Year to Date (YTD) Green Power Sales (MWh)



### Green Power Purchases

New and Existing Green Power Purchased this Quarter by Generation Type (MWh)



New Purchased: 611 MWh  
Existing Purchased: 152 MWh

Year to Date Green Power Purchased by Generation Type (MWh)

Generation Type	Existing (MWh)	New (MWh)	Total (MWh)
Wind	0.0	0.0	0.0
Solar	0.0	0.0	0.0
Hydro	0.0	0.0	0.0
Biomass	202.6	810.9	1,013.5
<b>Total</b>	<b>202.6</b>	<b>810.9</b>	<b>1,013.5</b>

## Clean Energy from Ergon Energy



**Availability:** Residential customers within Ergon Energy’s franchise area of regional Queensland and Ergon Energy’s contestable business customers in Queensland, NSW, the ACT and Victoria.

**Residential Customer Options:** Choose the level of support, which ranges from \$10 per bill to \$120 per bill. For each contribution level, Ergon will purchase a set amount of energy from Green Power approved sources on behalf of the customer.

**Commercial Customer Options:** Choose to allocate anywhere between 2.5% to 100% of electricity consumption to Clean Energy from Ergon Energy.

**Quarter in Review:** At the end of December 2005 there were 28,238 residential and 574 commercial Clean Energy customers. During the Quarter ending 31 December 2005 Clean Energy residential sales amounted to 2,962 MWh, commercial sales amounted to 902 MWh with total sales for the quarter 3,864 MWh.

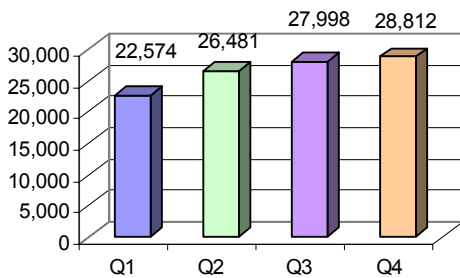
**‘New’ Green Power purchases this Quarter:** Windy Hill Wind Farm, Tinaroo Hydro, Tully Sugar Mill. South Johnstone Sugar Mill upgrade, Eastern Creek Landfill and Brooklyn Landfill.

**Contact Ergon Energy:** On 13 10 46, or visit [www.ergon.com.au](http://www.ergon.com.au).

## Quarter in Review

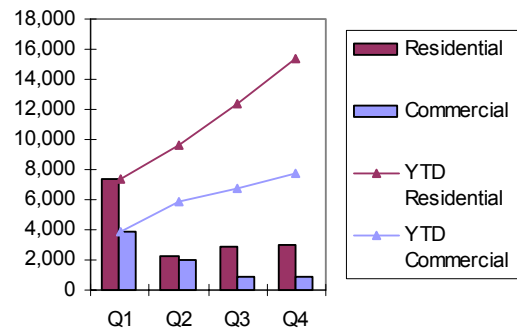
### GREEN POWER CUSTOMERS

Total Green Power Customers Per Quarter



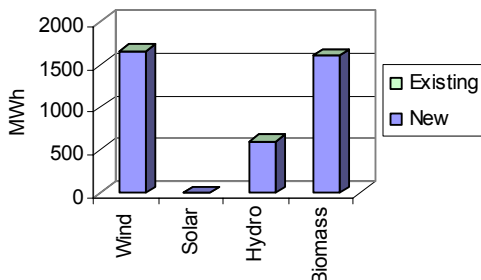
### GREEN POWER SALES

Quarterly and Year to Date (YTD) Green Power Sales<sup>ii</sup> (MWh)



### Green Power Purchases

New and Existing<sup>i</sup> Green Power Purchased this Quarter by Generation Type (MWh)



New Purchased: 3,864 MWh  
Existing Purchased: 0 MWh

Year to Date Green Power Purchased by Generation Type (MWh)

Generation Type	Existing (MWh)	New (MWh)	Total (MWh)
Wind	0.0	7,350.0	7,350.0
Solar	0.0	0.0	0.0
Hydro	0.0	2,126.0	2,126.0
Biomass	0.0	5,706.0	5,706.0
<b>Total</b>	<b>0.0</b>	<b>15,182.0</b>	<b>15,182.0</b>



## Clean Energy Plus from Ergon Energy



**Availability:** Offered exclusively to contestable business customers in Queensland, NSW, the ACT and Victoria. 'Clean Energy Plus from Ergon Energy' is the 100% accredited Green Power product offered by Ergon Energy.

**Commercial Customer options:** Choose to allocate anywhere between 2.5% to 100% of electricity consumption to Clean Energy Plus from Ergon Energy.

**Quarter in Review:** At the end of December 2005 there were three Clean Energy Plus customers. During the Quarter ending 31 December 2005 Clean Energy Plus sales amounted to 765 MWh.

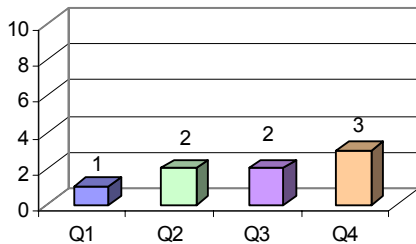
**'New' Green Power purchases this Quarter:** Koombaloo Hydro, Tinaroo Hydro and Eastern Creek Landfill.

**Contact Ergon Energy:** On 13 10 46, or visit [www.ergon.com.au](http://www.ergon.com.au).

## Quarter in Review

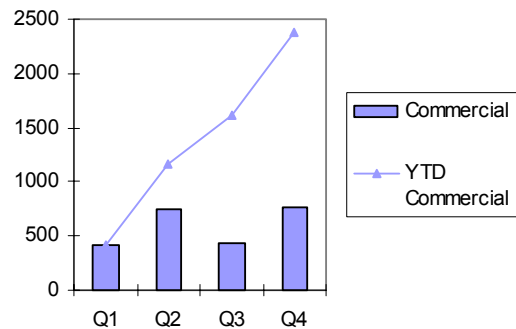
### GREEN POWER CUSTOMERS

#### Total Green Power Customers Per Quarter



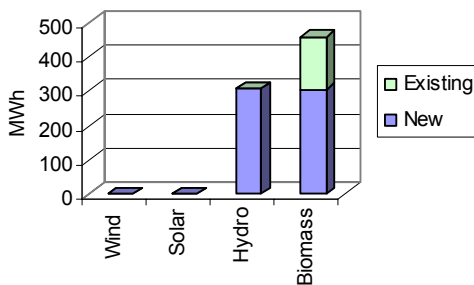
### GREEN POWER SALES

#### Quarterly and Year to Date (YTD) Green Power Sales (MWh)



### Green Power Purchases

#### New and Existing<sup>1</sup> Green Power Purchased this Quarter by Generation Type (MWh)



#### Year to Date Green Power Purchased by Generation Type (MWh)

Generation Type	Existing (MWh)	New (MWh)	Total (MWh)
Wind	0.0	593.0	<b>593.0</b>
Solar	0.0	0.0	<b>0.0</b>
Hydro	0.0	661.0	<b>661.0</b>
Biomass	475.0	643.0	<b>1,118.0</b>
<b>Total</b>	<b>475.0</b>	<b>1,897.0</b>	<b>2,372.0</b>

New Purchased: 612 MWh  
Existing Purchased: 153 MWh



## Integral Energy Hampton Park Wind



**Availability:** NSW residential customers and small retail business customers with basic meters. Please note that Integral Energy is currently unable to offer this product to customers located in the Country Energy franchise area.

**Residential Customer Options:** Choose to have 20%, 50% or 100% of electricity (excluding off peak) matched with renewable energy from the Hampton Wind Park near Lithgow

**Quarter in Review:** At the end of December 2005 there were 142 Hampton Wind Park customers. During the Quarter ending 31 December 2005 Hampton Wind Park sales amounted to 98 MWh.

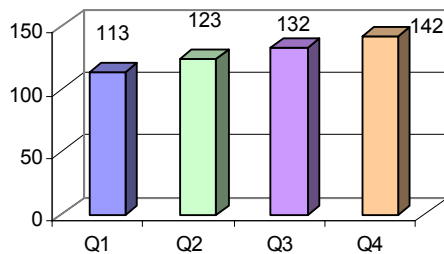
**'New' Green Power purchases this Quarter:** Hampton Wind Park.

**Contact Integral Energy:** On 131 002 or visit [www.integral.com.au](http://www.integral.com.au).

## Quarter in Review

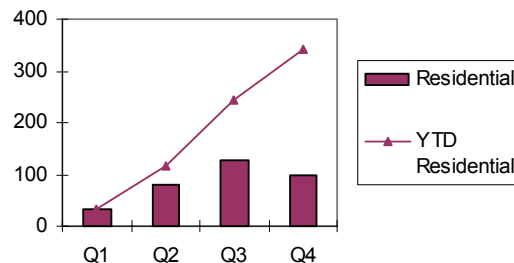
### GREEN POWER CUSTOMERS

Total Green Power Customers Per Quarter



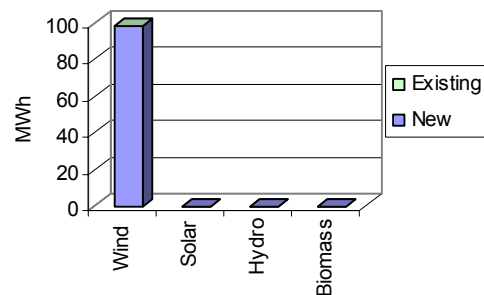
### GREEN POWER SALES

Quarterly and Year to Date (YTD) Green Power Sales (MWh)



### Green Power Purchases

New and Existing<sup>1</sup> Green Power Purchased this Quarter by Generation Type (MWh)



Year to Date Green Power Purchased by Generation Type (MWh)

Generation Type	Existing (MWh)	New (MWh)	Total (MWh)
Wind	0.0	868.6	<b>868.6</b>
Solar	0.0	0.0	<b>0.0</b>
Hydro	0.0	0.0	<b>0.0</b>
Biomass	0.0	0.0	<b>0.0</b>
<b>Total</b>	<b>0.0</b>	<b>868.6</b>	<b>868.6</b>

New Purchased: 98 MWh  
Existing Purchased: 0 MWh



# Integral Energy Wyuna Water



**Availability:** NSW residential customers and small retail business customers with basic meters. Please note that Integral Energy is currently unable to offer this product to customers located in the Country Energy franchise area.

**Residential Customer Options:** Choose to have 20%, 50% or 100% of electricity (excluding off peak) matched with renewable energy from the Wyuna Water hydro-electric generator.

**Quarter in Review:** At the end of December 2005 there were 790 residential and 10 commercial Wyuna Water customers. During the Quarter ending 31 December 2005 Wyuna Water residential sales amounted to 437 MWh, commercial sales amounted to 264 MWh with total sales for the quarter 701 MWh.

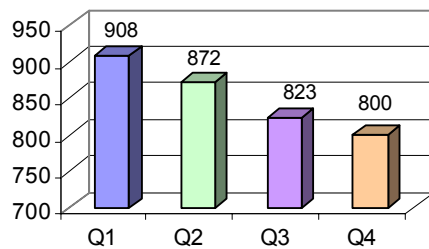
**'New' Green Power purchases this Quarter:** Wyuna Water.

**Contact Integral Energy:** On 131 002 or visit [www.integral.com.au](http://www.integral.com.au).

## Quarter in Review

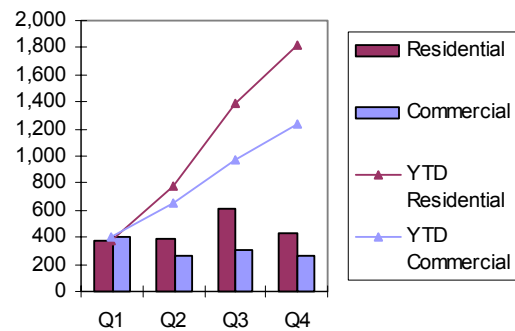
### GREEN POWER CUSTOMERS

Total Green Power Customers Per Quarter



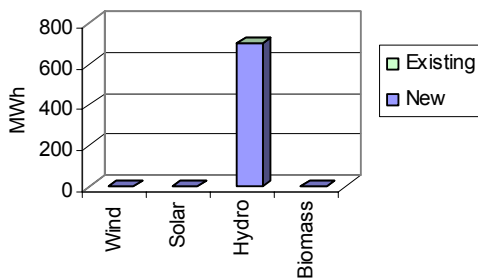
### GREEN POWER SALES

Quarterly and Year to Date (YTD) Green Power Sales (MWh)



### Green Power Purchases

New and Existing<sup>1</sup> Green Power Purchased this Quarter by Generation Type (MWh)



Year to Date Green Power Purchased by Generation Type (MWh)

Generation Type	Existing (MWh)	New (MWh)	Total (MWh)
Wind	0.0	0.0	0.0
Solar	0.0	0.0	0.0
Hydro	0.0	6,706.9	6,706.9
Biomass	0.0	0.0	0.0
<b>Total</b>	<b>0.0</b>	<b>6,706.9</b>	<b>6,706.9</b>

New Purchased: 700 MWh  
Existing Purchased: 0 MWh



# Integral Energy Business Green Power



**Availability:** Large commercial consumers in NSW.

**Commercial Customer Options:** Source a portion of electricity consumption from a range of Green Power approved renewable sources (currently solar, wind and hydro).

**Quarter in Review:** At the end of December 2005 there were 5 commercial Business Green customers. During the Quarter ending 31 December 2005 Business Green sales amounted to 11,535 MWh.

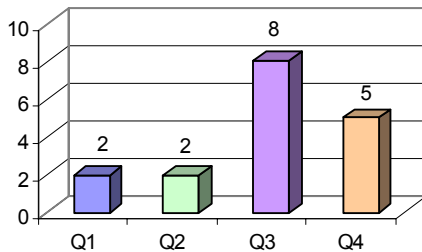
**'New' Green Power purchases this Quarter:** Hampton Wind Park, Wyuna Water and various Solar PV Systems throughout NSW.

**Contact Integral Energy:** On 131 002 or visit [www.integral.com.au](http://www.integral.com.au).

## Quarter in Review

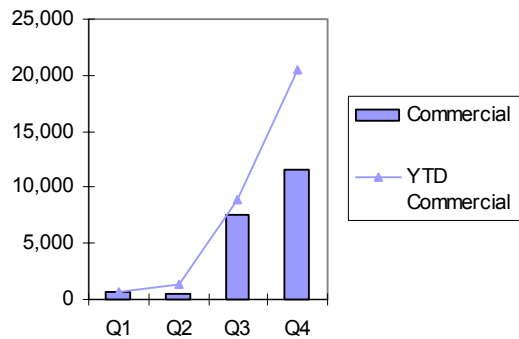
### GREEN POWER CUSTOMERS

Total Green Power Customers Per Quarter



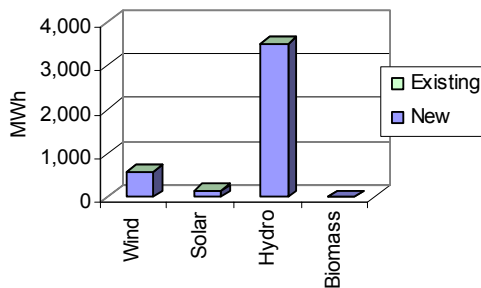
### GREEN POWER SALES

Quarterly and Year to Date (YTD) Green Power Sales (MWh)



### Green Power Purchases

New and Existing<sup>1</sup> Green Power Purchased this Quarter by Generation Type (MWh)



New Purchased: 4,222 MWh  
Existing Purchased: 5 MWh

Year to Date Green Power Purchased by Generation Type (MWh)

Generation Type	Existing (MWh)	New (MWh)	Total (MWh)
Wind	0.0	2,335.0	<b>2,335.0</b>
Solar	9.5	224.7	<b>234.3</b>
Hydro	0.0	13,933.7	<b>13,933.7</b>
Biomass	0.0	0.0	<b>0.0</b>
<b>Total</b>	<b>9.5</b>	<b>16,493.4</b>	<b>16,502.9</b>



# Origin Energy GreenEarth



**Availability:** Residential Origin Energy customers in Victoria, NSW and South Australia and commercial customers in any competitive state in Australia.

**Residential Customer Options:** Choose to purchase the following Green Power options: 100% - GreenEarth Solar or GreenEarth Wind; 62.5% - GreenEarth Extra; 25% - GreenEarth (Victoria and South Australia) or 12.5% - GreenEarth (NSW).

**Commercial Customer Options:** Negotiate a percentage of Green Power to suit individual needs.

**Quarter in Review:** At the end of December 2005 there were 68,160 residential and 699 commercial GreenEarth customers. During the Quarter ending 31 December 2005 GreenEarth residential sales amounted to 20,300 MWh, commercial sales amounted to 5,860 MWh with total sales for the quarter 26,161 MWh.

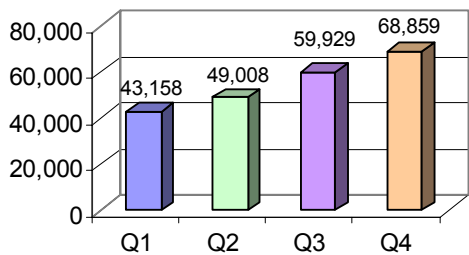
**'New' Green Power purchases this Quarter:** Challicum Hills, Codrington and Toora Wind Farms in Victoria and Windy Hill Wind Farm in Queensland.

**Contact Origin Energy:** On 13 24 63 or visit [www.originenergy.com.au](http://www.originenergy.com.au)

## Quarter in Review

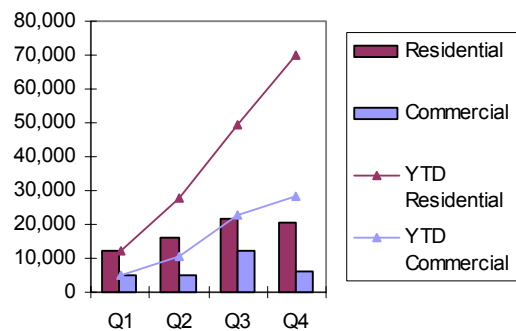
### GREEN POWER CUSTOMERS

Total Green Power Customers Per Quarter



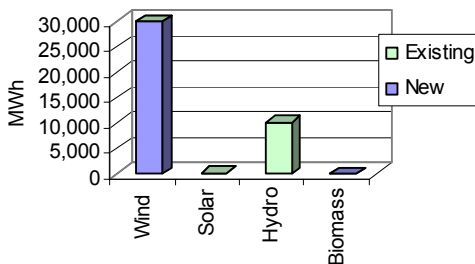
### GREEN POWER SALES

Quarterly and Year to Date (YTD) Green Power Sales (MWh)



### Green Power Purchases

New and Existing<sup>1</sup> Green Power Purchased this Quarter by Generation Type (MWh)



Year to Date Green Power Purchased by Generation Type (MWh)

Generation Type	Existing (MWh)	New (MWh)	Total (MWh)
Wind	0.0	152,745.0	152,745.0
Solar	0.0	242.0	242.0
Hydro	38,188.0	0.0	38,188.0
Biomass	0.0	2,732.0	2,732.0
<b>Total</b>	<b>38,188.0</b>	<b>155,719.0</b>	<b>193,907.0</b>

New Purchased: 30,104 MWh  
Existing Purchased: 10,145 MWh



## Origin Energy EcoSaver



**Availability:** This product is not offered to new customers, however existing EcoSaver customers continue to be serviced.

**Quarter in Review:** At the end of December 2005 there were 4,806 residential EcoSaver customers. During the Quarter ending 31 December 2005 EcoSaver sales amounted to 2,263 MWh.

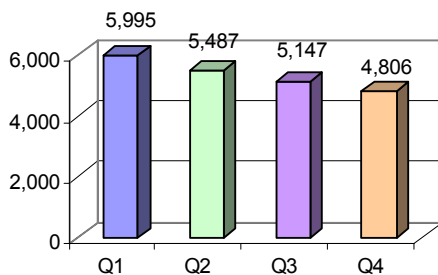
**'New' Green Power purchases this Quarter:** Challicum Hills, Codrington and Toora Wind Farms in Victoria, Windy Hill Wind Farm in Queensland and Malabar STP.

**Contact Origin Energy:** On 13 24 63 or visit [www.originenergy.com.au](http://www.originenergy.com.au).

## Quarter in Review

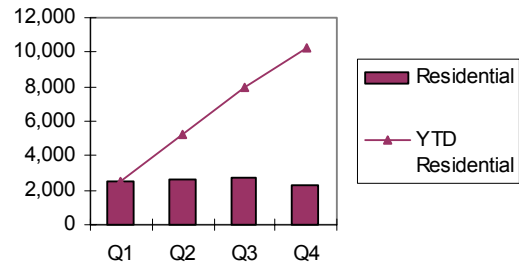
### GREEN POWER CUSTOMERS

Total Green Power Customers Per Quarter



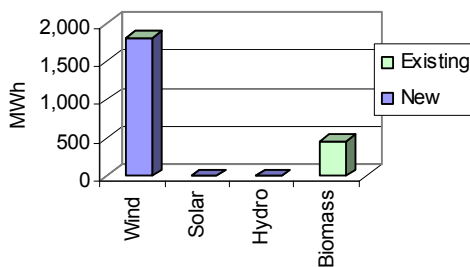
### GREEN POWER SALES

Quarterly and Year to Date (YTD) Green Power Sales (MWh)



### Green Power Purchases

New and Existing<sup>1</sup> Green Power Purchased this Quarter by Generation Type (MWh)



Year to Date Green Power Purchased by Generation Type (MWh)

Generation Type	Existing (MWh)	New (MWh)	Total (MWh)
Wind	0.0	8,508.0	<b>8,508.0</b>
Solar	0.0	0.0	<b>0.0</b>
Hydro	0.0	0.0	<b>0.0</b>
Biomass	2,549.0	1,687.0	<b>4,236.0</b>
<b>Total</b>	<b>2,549.0</b>	<b>10,195.0</b>	<b>12,744.0</b>

New Purchased: 1,811 MWh  
Existing Purchased: 453 MWh

## Origin Energy EcoPower



**Availability:** This product is not offered to new customers, however existing EcoPower customers continue to be serviced.

**Quarter in Review:** At the end of December 2005 there were 152 residential and 595 commercial EcoPower customers. During the Quarter ending 31 December 2005 EcoPower residential sales amounted to 105 MWh, commercial sales amounted to 2,678 MWh with total sales for the quarter 2,784 MWh.

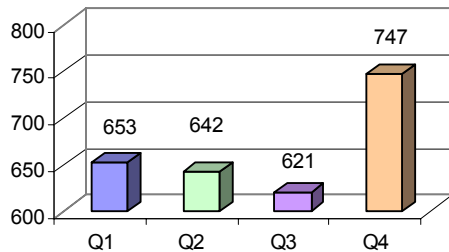
**'New' Green Power purchases this Quarter:** Challicum Hills, Codrington and Toora Wind Farms in Victoria and Windy Hill Wind Farm in Queensland.

**Contact Origin Energy:** On 13 24 63 or visit [www.originenergy.com.au](http://www.originenergy.com.au).

## Quarter in Review

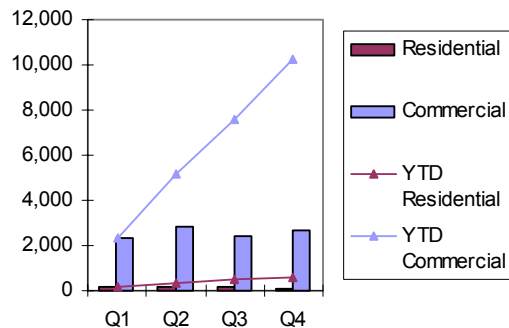
### GREEN POWER CUSTOMERS

Total Green Power Customers Per Quarter



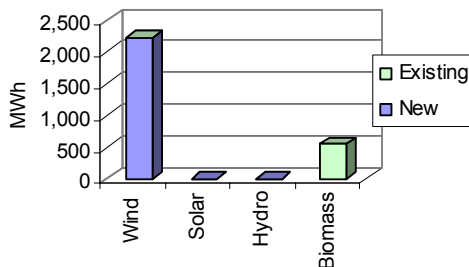
### GREEN POWER SALES

Quarterly and Year to Date (YTD) Green Power Sales (MWh)



### GREEN POWER PURCHASES

New and Existing<sup>1</sup> Green Power Purchased this Quarter by Generation Type (MWh)



New Purchased: 2,227 MWh  
Existing Purchased: 557 MWh

Year to Date Green Power Purchased by Generation Type (MWh)

Generation Type	Existing (MWh)	New (MWh)	Total (MWh)
Wind	0.0	8,571.0	8,571.0
Solar	0.0	0.0	0.0
Hydro	1,098.0	0.0	1,098.0
Biomass	1,045.0	0.0	1,045.0
<b>Total</b>	<b>2,143.0</b>	<b>8,571.0</b>	<b>10,714.0</b>

## TRUenergy green

**Availability:** Residential and commercial customers in Victoria, South Australia and NSW.

**Residential Customer Options:** Choose to purchase one of three Green Energy products including TRUenergy Planet and TRUenergy Planet Plus, sourced from a combination of 'new' and 'existing' renewable energy, or TRUenergy Wind Power sourced from 100% 'new' wind energy.

**Commercial Customer Options:** Choose to purchase TRUenergy Eco-Friendly, sourced from a combination of 'new' and 'existing' renewable energy, or TXU Wind Power, sourced from 100% 'new' wind energy.

**Quarter in Review:** At the end of December 2005 there were 13,527 residential and 347 commercial TRUenergy Green customers. During the Quarter ending 31 December 2005 TRUenergy Green residential sales amounted to 2,422 MWh, commercial sales amounted to 2,136 MWh with total sales for the quarter 4,558 MWh.

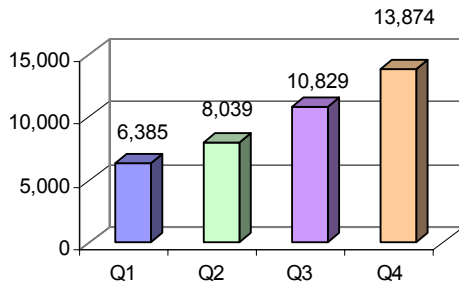
**'New' Green Power purchases this Quarter:** Berwick Landfill Upgrade and Wattle Point and Cathedral Rocks Wind Farms.

**Contact TRUenergy:** On 133 466 or visit <http://www.truenergy.com.au/>

## Quarter in Review

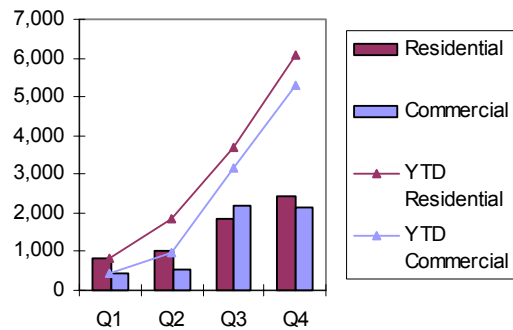
### GREEN POWER CUSTOMERS

Total Green Power Customers Per Quarter



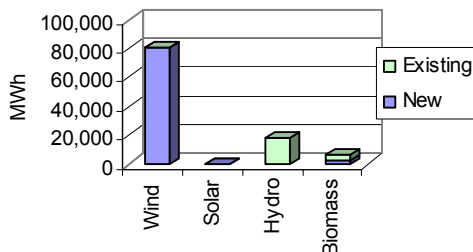
### GREEN POWER SALES

Quarterly and Year to Date (YTD) Green Power Sales (MWh)



### Green Power Purchases

New and Existing<sup>1</sup> Green Power Purchased this Quarter by Generation Type (MWh)



Year to Date Green Power Purchased by Generation Type (MWh)

Generation Type	Existing (MWh)	New (MWh)	Total (MWh)
Wind	0.0	152,700.0	<b>152,700.0</b>
Solar	0.0	0.0	<b>0.0</b>
Hydro	64,227.4	0.0	<b>64,227.4</b>
Biomass	18,005.3	8,868.3	<b>26,873.6</b>
<b>Total</b>	<b>82,232.7</b>	<b>161,568.3</b>	<b>243,801.0</b>

New Purchased: 82,385 MWh  
Existing Purchased: 22,547 MWh

## Western Power NaturalPower

**Availability:** Western Power’s residential, business and government customers located on Western Power’s South West Interconnected System.



**Residential Customer Options:** Choose to purchase 25%, 50%, 75% or 100% NaturalPower.

**Commercial Customer Options:** Choose to purchase 5%, 10%, 25%, 50%, 75% or 100% NaturalPower. Other percentages can be negotiated for large contract commercial customers.

**Quarter in Review:** At the end of December 2005 there were 1,127 residential and 105 commercial NaturalPower customers. During the Quarter ending 31 December 2005 NaturalPower residential sales amounted to 1,021 MWh, commercial sales amounted to 2,395 MWh with total sales for the quarter 3,416 MWh.

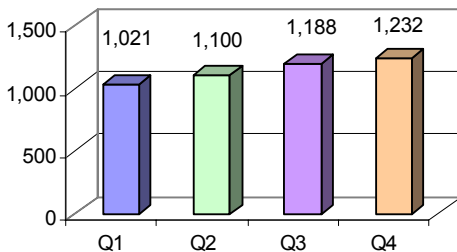
**‘New’ Green Power purchases this quarter:** Albany Wind Farm and Rockingham Photovoltaic System.

**Contact Western Power:** On 13 13 53, or visit: [www.westernpower.com.au](http://www.westernpower.com.au).

## Quarter in Review

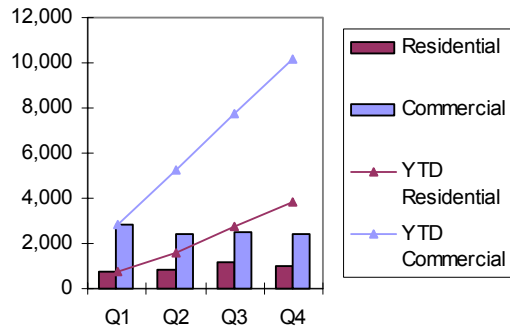
### GREEN POWER CUSTOMERS

#### Total Green Power Customers Per Quarter



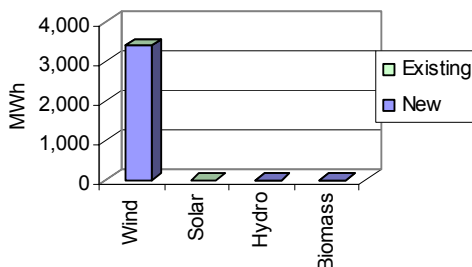
### GREEN POWER SALES

#### Quarterly and Year to Date (YTD) Green Power Sales (MWh)



### Green Power Purchases

#### New and Existing<sup>1</sup> Green Power Purchased this Quarter by Generation Type (MWh)



#### Year to Date Green Power Purchased by Generation Type (MWh)

Generation Type	Existing (MWh)	New (MWh)	Total (MWh)
Wind	0.0	13936.3	<b>13936.3</b>
Solar	23.9	1.6	<b>25.5</b>
Hydro	0.0	0.0	<b>0.0</b>
Biomass	0.0	0.0	<b>0.0</b>
<b>Total</b>	<b>23.9</b>	<b>13937.8</b>	<b>13961.7</b>

New Purchased: 3,410 MWh  
Existing Purchased: 6 MWh

## Appendix A – Major Generator Types

### SOLAR PHOTOVOLTAIC AND SOLAR THERMAL ELECTRIC SYSTEMS

Energy from the sun can be categorised in two ways, as heat energy (thermal energy) or as light energy.

Photovoltaics are a semiconductor-based technology which converts the sun's *light* energy directly into an electrical current. Photovoltaic panels are very versatile and can be mounted in a variety of sizes and applications such as on building roofs, roadside emergency phones or in solar powered calculators.

Solar thermal systems use the sun's heat to generate electricity, usually by heating a fluid such as water and using it to drive a turbine. Such systems are not common in Australia.

### WIND TURBINES AND WIND FARMS

Wind turbines can be used to drive a generator to create electricity. Modern wind turbines for generating electricity usually have two or three blades (up to 45m in length) and often involve dual land use, as sheep and cattle can graze around the base of the turbines. A single wind turbine may be sufficient to power up to 500 homes. Commercial wind farms group these turbines together in one location to produce larger amounts of electricity.

### HYDRO-ELECTRIC POWER STATIONS

Hydro-electric power is electricity produced from the energy of falling water using dams, turbines and generators. The environmental impact of hydro-electric projects varies and only those that can be shown to be environmentally acceptable can be classified as 'green'.

### BIOMASS-FIRED GENERATORS

Methane generated by the decomposition of biomass resources (putrescible and green waste) in landfill sites, sewage treatment works or large scale composting can be used to generate electricity. Waste materials from agricultural enterprises such as forestry, sugar cane, winery and cotton production can also be used to generate electricity.

Such projects are considered generally suitable as Green Power projects, but are carefully assessed by the Project Manager on a case by case basis.

A wide variety of crops could be grown specifically for energy generation including timbers, oils or complex sugars. The suitability of these crops will depend on the sustainability of the agricultural practices used. The "energy crops" industry is in its infancy in Australia.

With regard to forestry wastes, utilisation of fuels from existing forestry plantations is likely to be generally acceptable under Green Power. However, utilisation of any materials (including wastes) from high conservation value forests such as old growth forests is not acceptable.

## ENDNOTES

i

A 'new' Green Power generator is defined as an electricity generator or increase in generator capacity, which was commissioned or first sold energy (whichever is earlier) after January 1, 1997 or after launch of the Green Power Product (whichever is earlier)

An 'existing' Green Power generator is defined as an electricity generator or increase in generator capacity which was commissioned or first sold energy (whichever is earlier) prior to January 1, 1997.

ii

For the Green Power product 'Clean Energy from Ergon Energy', an increase in customer numbers but decrease in Green Power sales between quarter one and subsequent quarters of the reporting period is attributable to a change in reporting practices for this product. For the quarter ending 31 March 2005, Green Power sales were reported for both the Green Power accredited and non-accredited proportions of this product. Following discussions with the Project Manager, Green Power sales for subsequent quarters of the 2005 settlement period were reported for only the 30% Green Power accredited proportion of this product.